



2016 Program Organization



Grades 3, 4 and 5

For the 2016 season RYSI lacrosse will be participating in the G8 Conference, a league offering local competition at all levels of play. The G8 towns include Ridge, Chatham, Summit, Westfield, Madison, Ridgewood, Mt Lakes and Chester Mendham. Most in-season games are against G8 teams.

Teaching the game is RYSI's primary objective at grades 3, 4 and 5. Coaches will stress fundamentals and give players opportunity to experience the game at multiple positions. The goal is to give each player 10-14 games.

Grades with more than enough players for a single team can embark on the season with 2 separate and balanced teams. If numbers do not support two teams the Grade Level Head Coach can choose to enter the season using PODS.

Balanced Teams:

- The optimal number of field players for a single game is 18 and a goalie. Over 19 players at a game can be disruptive, requiring coaches to rotate players often, keep them focused and engaged on the sidelines, and ensure adequate playing time.
- If a grade is lucky enough to have enough players registered to field two teams, these team should be equally divided and talent should be balanced.
- Under no circumstances will RYSI endorse A/B teams at the 3rd, 4th and 5th grade levels.

PODS:

- For grades with numbers over 18 and less than 32, PODS may be used.
- Pods will rotate with the game schedule and will be managed by the Grade Level Head and Grade Level Liaison to ensure as equal an opportunity as possible for each participant.
- PODS are NOT intended to group more experienced players together. The intent is to allow each player to have meaningful playing time at each game they attend.
- Games with 18-19 players will allow more playing time and touches.

If you have any questions regarding the structure detailed herein, please email rysilax@earthlink.net and a RYSI Lacrosse board member will be in contact with you to discuss your concerns.



2016 Program Organization



Grades 6, 7 and 8

For the 2016 season RYSI Lacrosse will be participating in the G8 Conference. Participation in this league requires RYSI to field A and B teams for travel games at 6th, 7th and 8th grade levels. The purpose of dividing the teams in grades 6, 7 and 8 is to allow all players to compete at an appropriate skill level. Player placement will be made by the combined decision of the grade coaches.

While teaching the game is still RYSI's primary objective, the upper grades are tailored toward fundamental skill advancement, developing players for the next level as well as providing a more strategic and competitive environment for their development. The goal is to give each player approximately 15 game events.

Player Observations:

- Observations will be completed during the regularly scheduled pre-season practices to gauge each player within each grade for appropriate team placement.
- Grading will be done by the grade coaches and will be provided to the Grade Level Head only. Specific observations are private and are kept confidential.
- The Grade Level Head will have the final decision regarding grade management and player placement. However, he will solicit input from the grade coaches to make informed decisions.
- Players will be judged and graded on a player's lacrosse talent level and factors including:
 - Athleticism, lacrosse skills and lacrosse IQ, athleticism, and team concepts.
- Using this criteria, players will be scored by position and the weighting will create A and B teams. The Grade Level Head will determine the number of players in each position carried on each roster.
- The Grade Level Head may call for additional help to observe players before the initial teams have been formed in order to ensure final determinations.

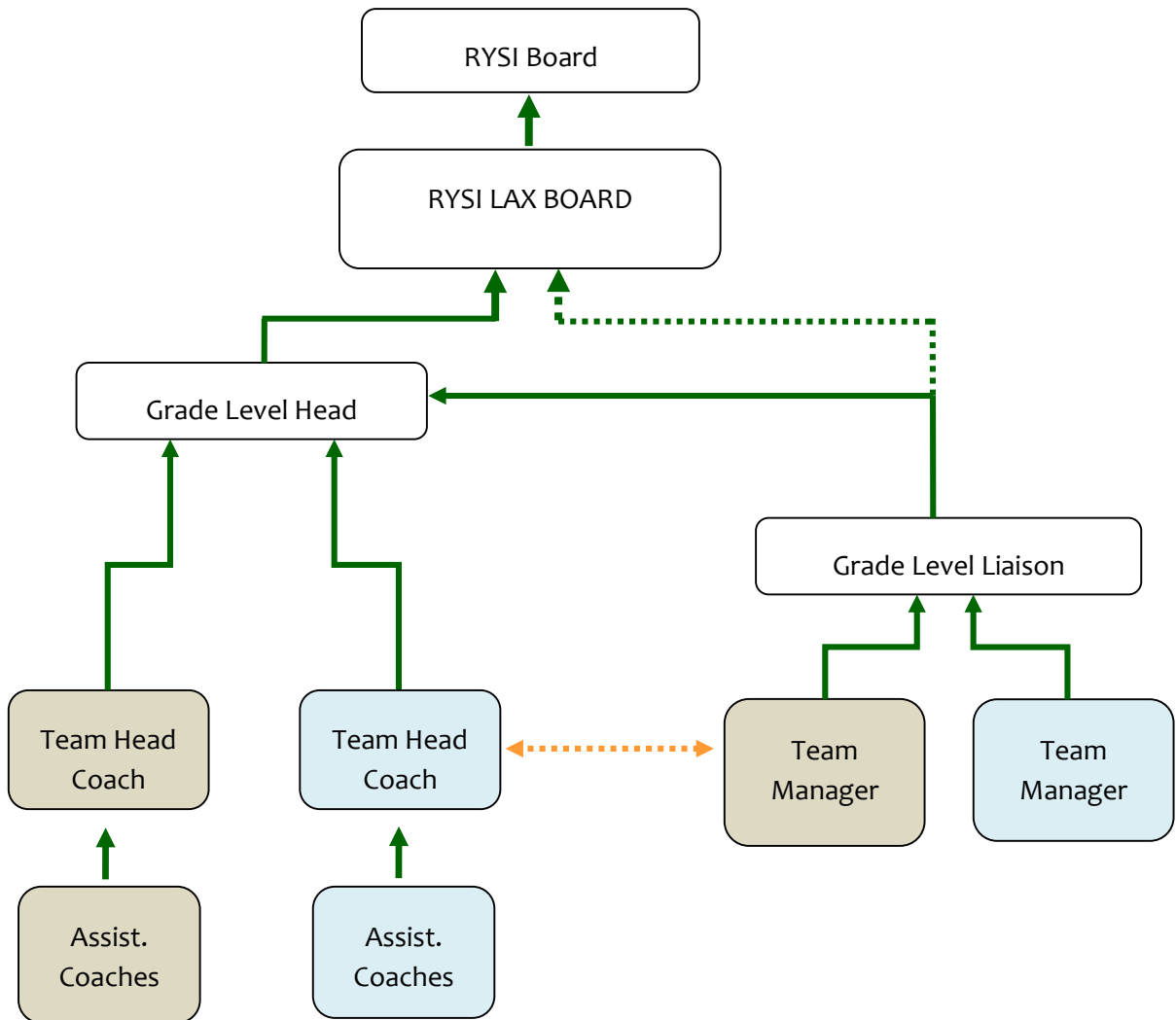
Considerations:

- **Players will be observed during regularly scheduled practices. Parents and players should be aware that it is very important for players to make every practice so that they are properly evaluated.**
- Players may be moved between A and B teams during the season to fulfill a game rosters, or recognize player for outstanding effort or improved skills.
- Any parent wishing to discuss the placement of a player on a specific team should to do so with the Grade Level Liaison. If after communication with the Grade Level Liaison, parents may email rysilax@earthlink.net and a RYSI Lacrosse Board member will be in contact with you.



Program Org Chart

2016 Program Organization



- Grade Level Head will be the Team Head Coach of one team and set the strategy for the **entire** grade
 - If multiple teams are designated within the grade Each team will have a Head Coach. Grade Level Head will head 1 team. Grades should practice as a unit and every player should benefit from the expertise of every coach.
- Grade Level Liaison will:
 - Serve the entire grade level
 - Have dual reporting to the Grade Level Head and the RYSI Board for escalation as needed
 - Serve as Team Manager when only 1 team is designated in the grade
 - It is recommended each unique team within the grade have its own Team Manager